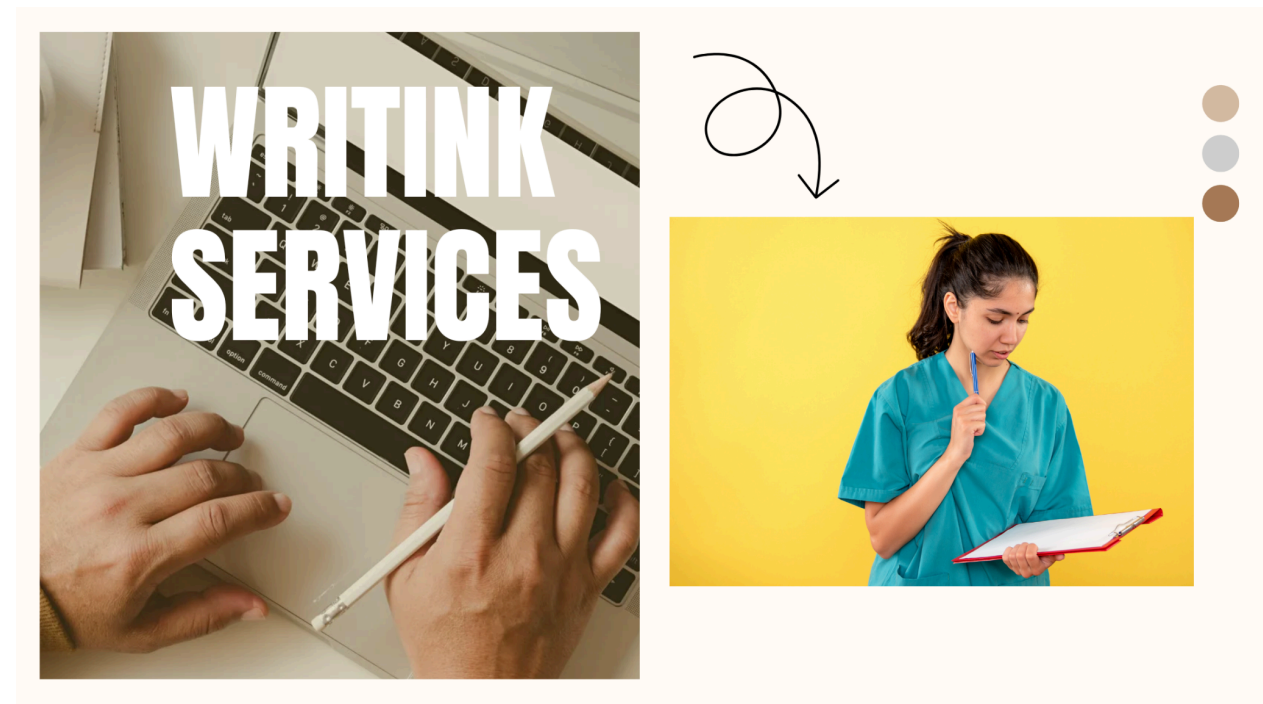


The Complete Guide to NURS FPX 4055 Assessments: Expert Help for Nursing Students

Introduction: Navigating Health Promotion Challenges in Nursing Education

For nursing students overwhelmed by coursework, clinical rotations, and personal commitments, exploring options to [do your class](#) can provide crucial academic support. The NURS FPX 4055 course focuses on essential health promotion and community health concepts that are fundamental to modern nursing practice. This comprehensive guide thoroughly examines each assessment while demonstrating how professional assistance can help you succeed without compromising your learning outcomes.



The NURS FPX 4055 course develops critical competencies through four progressive assessments that build upon each other, culminating in a comprehensive health promotion plan. These assignments require significant research into community resources, disaster planning, and health education strategies. Many students find these topics challenging to master while balancing other academic and personal responsibilities.

NURS FPX 4055 Assessment 1: Health Promotion Research

The course begins with [NURS FPX 4055 Assessment 1](#), establishing the research foundation for health promotion initiatives. This critical first assignment typically requires students to:

- Analyze current health promotion literature
- Identify evidence-based intervention strategies
- Evaluate research methodologies
- Develop scholarly recommendations

Students often struggle with navigating academic databases, synthesizing research findings, and applying evidence to practical scenarios. The required research volume can be particularly daunting for those new to scholarly writing.

For students considering whether to **do your class**, professional support can provide valuable assistance with:

- Developing effective search strategies
- Critically appraising research articles
- Organizing literature reviews
- Applying evidence to practice
- Meeting academic writing standards

With expert guidance, your **NURS FPX 4055 Assessment 1** submission can demonstrate strong research skills while establishing a solid foundation for subsequent health promotion work.

NURS FPX 4055 Assessment 2: Community Resources Analysis

Building on initial research, [NURS FPX 4055 Assessment 2](#) focuses on identifying and evaluating community health resources. This practical assignment requires students to:

- Map available community services
- Assess resource accessibility
- Identify service gaps
- Develop resource enhancement strategies

Many students find the transition from theoretical research to practical community analysis challenging. The fieldwork component often proves difficult for those with limited time or local community knowledge.

Professional services that help you **do your class** can provide essential support for Assessment 2 by offering:

- Community assessment frameworks
- Resource evaluation tools
- Gap analysis techniques
- Strategic planning templates
- Academic formatting guidance

This specialized help ensures your **NURS FPX 4055 Assessment 2** meets rigorous academic standards while developing practical skills for community health nursing.

NURS FPX 4055 Assessment 3: Disaster Recovery Planning

The third phase, [NURS FPX 4055 Assessment 3](#), addresses critical disaster preparedness in healthcare. This complex assignment typically requires:

- Risk assessment for specific communities
- Emergency preparedness evaluation
- Recovery plan development
- Stakeholder coordination strategies

Many nursing students struggle with the technical aspects of disaster planning or creating comprehensive yet practical recovery solutions.

For those needing support, services that help you **do your class** can assist with Assessment 3 by providing:

- Disaster planning frameworks
- Risk assessment tools

- Recovery strategy templates
- Stakeholder analysis methods
- Professional documentation standards

With this expert input, your **NURS FPX 4055 Assessment 3** can present a robust disaster recovery plan that meets all academic and practical requirements.

NURS FPX 4055 Assessment 4: Health Promotion Plan Presentation

The culminating **NURS FPX 4055 Assessment 4** requires students to synthesize their learning into a professional health promotion presentation. This capstone assignment demands:

- Clear communication of health promotion strategies
- Development of engaging educational materials
- Adaptation for diverse audiences
- Evaluation plan creation

Students often feel challenged by the need to balance academic rigor with audience-friendly presentation of complex health concepts.

Professional support options to **do your class** prove invaluable for Assessment 4 by offering:

- Presentation design principles
- Health literacy adaptation techniques
- Visual aid development guidance
- Evaluation metric establishment
- Delivery practice and feedback

This comprehensive assistance ensures your [NURS FPX 4055 Assessment 4](#) effectively communicates your health promotion plan while meeting the highest academic standards.

Why Professional Support Benefits Nursing Students

The NURS FPX 4055 course develops essential competencies but presents significant challenges:

- **Research Intensity** - Master academic literature searches
- **Practical Application** - Bridge theory and community practice
- **Time Demands** - Balance with clinical responsibilities
- **Presentation Skills** - Develop professional communication

Services that help you **do your class** provide customized support that:

- Enhances understanding of complex topics
- Saves valuable time
- Reduces unnecessary stress
- Improves academic performance
- Maintains learning integrity

Conclusion: Investing in Your Nursing Career

The NURS FPX 4055 assessments build essential health promotion skills for your nursing future. While challenging, professional support can help you:

- Develop crucial public health competencies
- Submit high-quality, polished work
- Manage workload effectively
- Reduce academic stress
- Focus on clinical learning

Remember, seeking help with **NURS FPX 4055 Assessment 1** through **Assessment 4** represents a strategic investment in your professional development. With the right support, you can successfully complete this demanding course while gaining skills that will enhance community health throughout your career.